



**Registered Office:  
GUYANA POWER & LIGHT, Inc.,**

40, Main Street, Cummingsburg, Georgetown, Guyana  
Telephone: 592-226-2600-9  
Fax: 592-227-1978

**ANNEX**

257/259 Middle Street, Cummingsburg, Georgetown, Guyana  
Telephone: 592-226-0565 / 66/68  
Fax: 592-226-9821

October 26<sup>th</sup>, 2020

Prospective Bidders

**Renovation of Civil Infrastructure – Berbice Transmission  
Towers.**

**IFB #GPL-PD-048-2020**

**ADDENDUM No. 3**

Please find attached an addendum on the above referenced tender. This addendum forms part of the contract and must be included in your bid submission.

Please acknowledge receipt of this addendum in the Contractor's Bid Form.

Should you require any further clarifications, do not hesitate to contact Mr. Travis Kilkenny, Project Officer-Civil, Projects Management Department, Guyana Power & Light Inc. @ 257/259 Middle Street, Cummingsburg, Georgetown, Tel. 608-8568 or 225-7929, email: tkilkenny@gplinc.com

Yours sincerely  
**GUYANA POWER & LIGHT INC.**

A handwritten signature in black ink, appearing to read "Lennox McGregor".

Lennox McGregor  
Projects Management Manager



**Registered Office:  
GUYANA POWER & LIGHT, Inc.,**

40, Main Street, Cummingsburg, Georgetown, Guyana  
Telephone: 592-226-2600-9  
Fax: 592-227-1978

**ANNEX**

257/259 Middle Street, Cummingsburg, Georgetown, Guyana  
Telephone: 592-226-0565 / 66/68  
Fax: 592-226-9821

**Renovation of Civil Infrastructure – Berbice Transmission  
Towers.**

**IFB #GPL-PD-048-2020**

**Addendum No.3**

This Addendum serves to notify of the following changes:

**1.0 LOT #1 TRANSMISSION TOWER AT BELLE VUE, EAST BANK BERBICE**

Page 57; Bill No. 3.0 – Timber Revetment, **item 3.3** is amended to now read the following:

“Supply, tar and fix **150mm** x 200mm x **7200mm** GH whaler to king piles using 2 No. 20mm dia. x 600mm long HT. bolts as shown in drawings. (include for 1.2m minimum overlap.)”

Page 57; Bill No. 3.0 – Timber Revetment, **item 3.4** is amended to now read the following:

“Supply, tar, point, fabricate and drive 8m long x 50mm x **300mm** greenheart (GH) **sheet piles, doubly ply, with 1/2 sheet overlap. See drawings for details.**”

**2.0 LOT #2 TRANSMISSION TOWER AT CANEFIELD, EAST BANK BERBICE**

Page 60; Bill No. 2 – Timber Revetment, **item 2.3** is amended to now read the following:

“Supply, tar and fix **150mm** x 200mm x **7200mm** GH whaler to king piles using 2 No. 20mm dia. x 600mm long HT. bolts as shown in drawings. (include for 1.2m minimum overlap.)”

Page 60; Bill No. 2 – Timber Revetment, **item 2.4** is amended to now read the following:

“Supply, tar, point, fabricate and drive 8m long x 50mm x **300mm** greenheart (GH) **sheet piles, doubly ply, with 1/2 sheet overlap. See drawings for details.**”



**Registered Office:  
GUYANA POWER & LIGHT, Inc.,**

40, Main Street, Cummingsburg, Georgetown, Guyana  
Telephone: 592-226-2600-9  
Fax: 592-227-1978

**ANNEX**

257/259 Middle Street, Cummingsburg, Georgetown, Guyana  
Telephone: 592-226-0565 / 66/68  
Fax: 592-226-9821

**3.0 LOT #3 TRANSMISSION TOWER AT LOCHABER, EAST BANK BERBICE**

Page 63; Bill No. 2 - Timber Revetment, **item 2.3** is amended to now read the following:

“Supply, tar and fix **150mm** x 200mm x **7200mm** GH whaler to king piles using 2 No. 20mm dia. x 600mm long HT. bolts as shown in drawings. (include for 1.2m minimum overlap.)”

Page 63; Bill No. 2 - Timber Revetment, **item 2.4** is amended to now read the following:

“Supply, tar, point, fabricate and drive 8m long x 50mm x **300mm** greenheart (GH) **sheet piles, doubly ply, with 1/2 sheet overlap. See drawings for details.**”

**4.0 LOT #4 TRANSMISSION TOWER AT BELLE VUE, EAST BANK BERBICE**

Page 67; Bill No. 3.0 - Timber Revetment, **item 3.3** is amended to now read the following:

“Supply, tar and fix **150mm** x 200mm x **7200mm** GH whaler to king piles using 2 No. 20mm dia. x 600mm long HT. bolts as shown in drawings. (include for 1.2m minimum overlap.)”

Page 67; Bill No. 3.0 - Timber Revetment, **item 3.4** is amended to now read the following:

“Supply, tar, point, fabricate and drive 8m long x 50mm x **300mm** greenheart (GH) **sheet piles, doubly ply, with 1/2 sheet overlap. See drawings for details.**”



**Registered Office:  
GUYANA POWER & LIGHT, Inc.,**

40, Main Street, Cummingsburg, Georgetown, Guyana  
Telephone: 592-226-2600-9  
Fax: 592-227-1978

**ANNEX**

257/259 Middle Street, Cummingsburg, Georgetown, Guyana  
Telephone: 592-226-0565 / 66/68  
Fax: 592-226-9821

**5.0 DRAWINGS**

Page 43; TITLE: **TYPICAL ELEVATION OF TIMBER REVETMENT (1)**,  
DWG NO.: **2020-CIV-03** is amended to now read the following:

“50mm x 300mm x **8m (Doubly Ply)** greenheart planks nailed together”

“350mm diameter x **18m** long Green Heart **King** Piles”

Page 44; TITLE: **TYPICAL ELEVATION OF TIMBER REVETMENT (2)**,  
DWG NO.: **2020-CIV-04** is amended to now read the following:

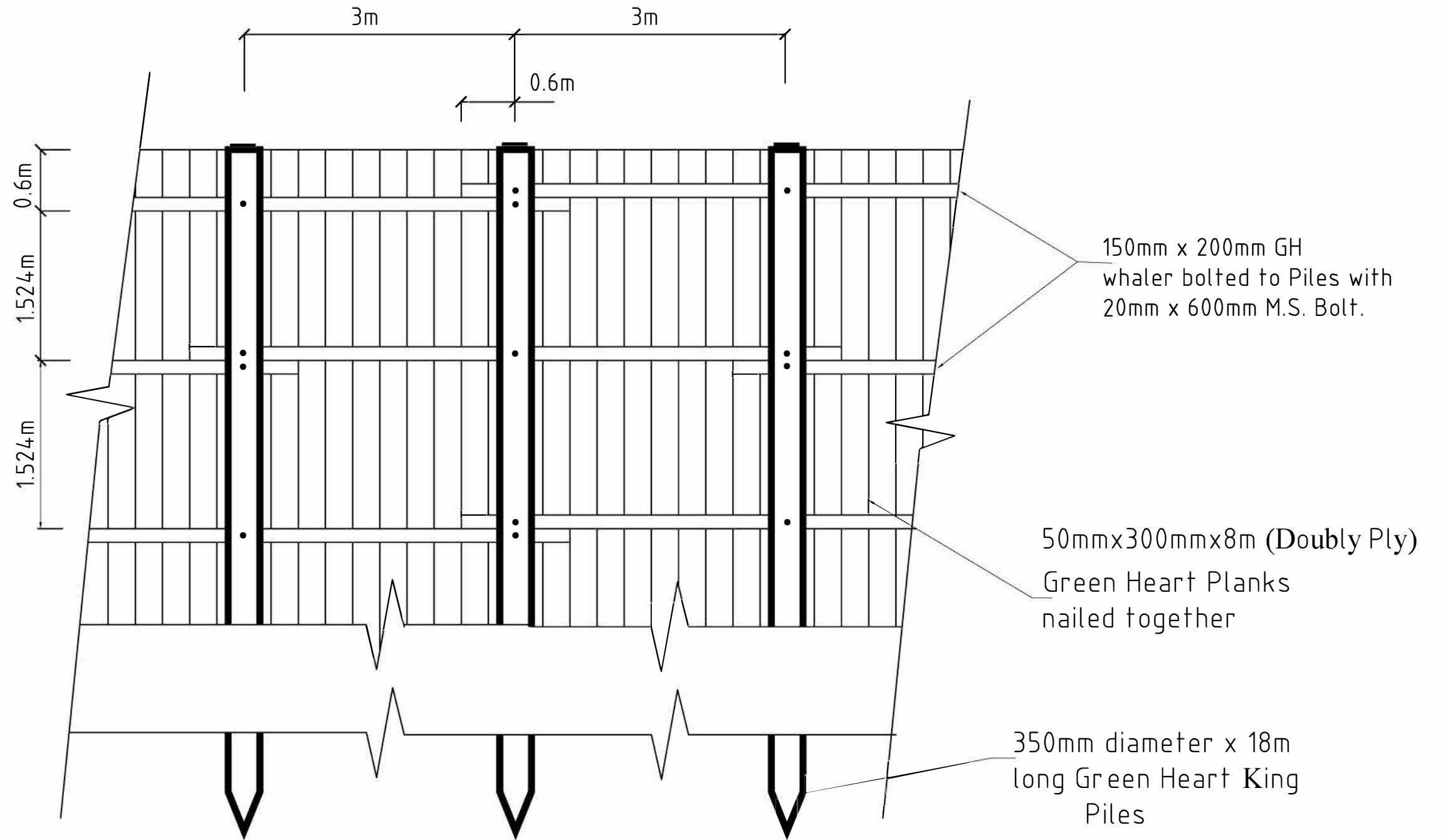
“350mm diameter x **18m** long Green Heart **King** Piles”

“350mm diameter x **14m** long Green Heart Anchor Piles”

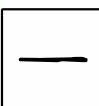
“**Reef Sand** Fill”

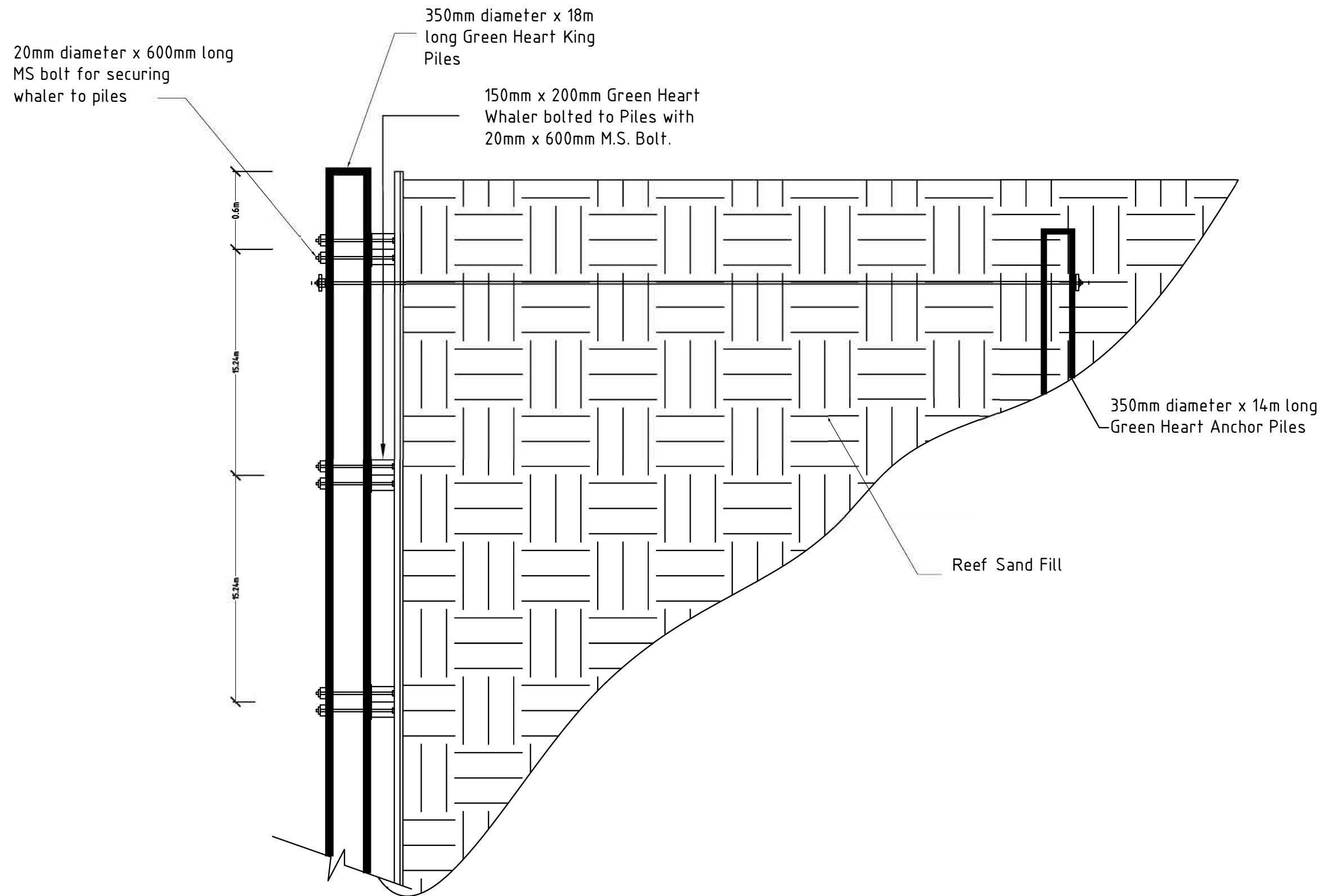
## DRAWINGS

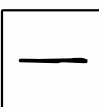
<b>DRAWING LIST</b>						<b>PROJECT:</b>		
						Renovation of Civil Infrastructure - Berbice Transmission Towers		
<b>NO.</b>	<b>DRAWING NO.</b>	<b>DESCRIPTION</b>	<b>REVISION</b>			<b>REMARK</b>		
			A	B				
1	2020-CIV-01	TYPICAL CHAINLINK FENCE AND GATE DETAIL	JUL.22.2020					
2	2020-CIV-03	TYPICAL ELEVATION OF TIMBER REVETMENT (1)	JUL.22.2020	OCT.26.2020				
3	2020-CIV-04	TYPICAL ELEVATION OF TIMBER REVETMENT (2)	JUL.22.2020	OCT.26.2020				
4	2020-CIV-05	DETAILS OF PEDESTRIAN BRIDGE	AUG.09.2020					
5	2020-CIV-06	PLAN OF PEDESTRIAN BRIDGE	AUG.09.2020					



***ELEVATION OF TIMBER REVETMENT***

 <p>GUYANA POWER &amp; LIGHT INC. PROJECTS MANAGEMENT DEPT. 257-259 MIDDLE STREET SOUTH CUMMINGSBURG GEORGETOWN.</p>	PROJECT	DRG. TITLE:	DESIGNED BY:	CHECKED BY:	APPROVED BY:
	RENOVATION OF CIVIL INFRASTRUCTURE - BERBICE TRANSMISSION TOWERS	TYPICAL ELEVATION OF TIMBER REVETMENT (SHEET 1 OF 2)	R.Harris	T.Kilkenny	
			SCALE: NTS	DATE: 2020-07-22	REVISION: B
			DRAWING No: 2020-CIV-03		



 <p><b>GUYANA POWER &amp; LIGHT INC.</b> PROJECTS MANAGEMENT DEPT. 257-259 MIDDLE STREET SOUTH CUMMINGSBURG GEORGETOWN.</p>	PROJECT	DRG. TITLE:	DESIGNED BY:	CHECKED BY:	APPROVED BY:
	RENOVATION OF CIVIL INFRASTRUCTURE - BERBICE TRANSMISSION TOWERS	TYPICAL ELEVATION OF TIMBER REVETMENT (SHEET 2 OF 2)	R.Harris	T.Kilkenny	
			SCALE: NTS	DATE: 2020-07-22	REVISION: B
			DRAWING No: 2020-CIV-04		



**GUYANA POWER & LIGHT INC.**  
**RENOVATION OF CIVIL INFRASTRUCTURE - BELLE VUE TRANSMISSION TOWER**  
**BELLE VUE, EAST BERBICE, REGION #6**

**Lot 1 - Transmission Tower at Belle Vue, East Bank Berbice**

<b>Bill No. 3.0 - Timber Revetment</b>		<b>Contract Amount</b>			
<b>Item</b>	<b>Description</b>	<b>Unit</b>	<b>Quantity</b>	<b>Rate</b>	<b>Amount</b>
	<b>General Note</b> All rates must include for transportation, materials, labour, machinery and equipment, overheads and profits.				
3.1	Supply, ring, point, pitch and drive 41 No. 350mm butt dia. 18m long G.H. king piles. Three coats of tar to be applied. Allow for supply and installation of 26G aluminium sheet protection to head of pile.	Lin.m	750		
3.2	Supply, ring, point, pitch and drive 21 No. 350mm butt dia. 14m long G.H. anchor piles. Three coats of tar to be applied.	Lin.m	294		
3.3	Supply, tar and fix 150mm x 200mm x 7200mm GH whaler to king piles using 2 No. 20mm dia. x 600mm long HT. bolts as shown in drawings. (include for 1.2m minimum overlap.)	Lin.m	360		
3.4	Supply, tar, point, fabricate and drive 8m long x 50mm x 300mm greenheart (GH) sheet piles, doubly ply, with 1/2 sheet overlap. See drawings for details.	Sq.m	960		
3.5	Place 500G geotextile fabric behind sheet pile wall extending into earth-fill as shown in drawing.	Sq.m	1200		
3.6	Provide and install 37mm diameter x 14.0m long HT steel tie rods wrapped in hessian complete with 150mm x 150mm x 6mm MS steel plate washers and nuts. Allow for all excavation works required to install tie rods .	Nr.	41		
3.7	Supply and install stainless steel turnbuckles (42mm) for joining tie rods.	Nr.	41		
3.8	Supply and backfill behind revetment using reef sand as directed by the Engineer.	Cu.m	2500		
<b>SUB-TOTAL CARRIED TO LOT SUMMARY</b>					





**GUYANA POWER & LIGHT INC.**  
**RENOVATION OF CIVIL INFRASTRUCTURE - CANEFIELD TRANSMISSION TOWER**  
**CANEFIELD, EAST BERBICE, REGION #6**

**Lot 2 - Transmission Tower at Canefield, East Bank Berbice**

<b>Bill No. 2.0 - Timber Revetment</b>		<b>Contract Amount</b>			
<b>Item</b>	<b>Description</b>	<b>Unit</b>	<b>Quantity</b>	<b>Rate</b>	<b>Amount</b>
	<b>General Note</b> All rates must include for transportation, materials, labour, machinery and equipment, taxes, overheads and profits.				
2.1	Supply, ring, point, pitch and drive 23 No. 350mm butt dia. 18m long G.H. king piles. Three coats of tar to be applied. Allow for supply and installation of 26G aluminim sheet protection to head of pile.	Lin.m	421		
2.2	Supply, ring, point, pitch and drive 12 No. 350mm butt dia. 14m long G.H. anchor piles. Three coats of tar to be applied.	Lin.m	168		
2.3	Supply, tar and fix 150mm x 200mm x 7200mm GH whaler to king piles using 2 No. 20mm dia. x 600mm long HT. bolts as shown in drawings. (include for 1.2m minimum overlap.)	Lin.m	195		
2.4	Supply, tar, point, fabricate and drive 8m long x 50mm x 300mm greenheart (GH) sheet piles, doubly ply, with 1/2 sheet overlap. See drawings for details.	Sq.m	520		
2.5	Place 500G geotextile fabric behind sheet pile wall extending into earth-fill as shown in drawing.	Sq.m	650		
2.6	Provide and install 37mm diameter x 14.0m long HT steel tie rods wrapped in hessian complete with 150mm x 150mm x 6mm MS steel plate washers and nuts. Allow for all excavation works required to install tie rods .	Nr.	12		
2.7	Supply and install stainless steel turnbuckles (42mm) for joining tie rods.	Nr.	12		
2.8	Supply and backfill behind revetment using selected clay as directed by the Engineer.	Cu.m	2300		
<b>SUB-TOTAL CARRIED TO LOT SUMMARY</b>					



**GUYANA POWER & LIGHT INC.**  
**RENOVATION OF CIVIL INFRASTRUCTURE - LOCHABER TRANSMISSION TOWER**  
**LOCHABER, EAST BERBICE, REGION #6**

**Lot 3 - Transmission Tower at Lochaber, East Bank Berbice**

<b>Bill No. 2.0 - Timber Revetment</b>		<b>Contract Amount</b>			
<b>Item</b>	<b>Description</b>	<b>Unit</b>	<b>Quantity</b>	<b>Rate</b>	<b>Amount</b>
	<b><u>General Note</u></b> All rates must include for transportation, materials, labour, machinery and equipment, taxes, overheads and profits.				
2.1	Supply, ring, point, pitch and drive 23 No. 350mm butt dia. 18m long G.H. king piles. Three coats of tar to be applied. Allow for supply and installation of 26G aluminim sheet protection to head of pile.	Lin.m	421		
2.2	Supply, ring, point, pitch and drive 12 No. 350mm butt dia. 14m long G.H. anchor piles. Three coats of tar to be applied.	Lin.m	168		
2.3	Supply, tar and fix 150mm x 200mm x 7200mm GH whaler to king piles using 2 No. 20mm dia. x 600mm long HT. bolts as shown in drawings. (include for 1.2m minimum overlap.)	Lin.m	195		
2.4	Supply, tar, point, fabricate and drive 8m long x 50mm x 300mm greenheart (GH) sheet piles, doubly ply, with 1/2 sheet overlap. See drawings for details.	Sq.m	520		
2.5	Place 500G geotextile fabric behind sheet pile wall extending into earth-fill as shown in drawing.	Sq.m	650		
2.6	Provide and install 37mm diameter x 14.0m long HT steel tie rods wrapped in hessian complete with 150mm x 150mm x 6mm MS steel plate washers and nuts. Allow for all excavation works required to install tie rods .	Nr.	12		
2.7	Supply and install stainless steel turnbuckles (42mm) for joining tie rods.	Nr.	12		
2.8	Supply and backfill behind revetment using selected clay as directed by the Engineer.	Cu.m	2300		
<b>SUB-TOTAL CARRIED TO LOT SUMMARY</b>					



**GUYANA POWER & LIGHT INC.**  
**RENOVATION OF CIVIL INFRASTRUCTURE - STANDVASTIGHEID TRANSMISSION TOWER**  
**WEST BERBICE, REGION #5**

**Lot 4 - Transmission Tower at Standvastigheid, West Bank Berbice**

<b>Bill No. 3.0 - Timber Revetment</b>					
Item	Description	Unit	Quantity	Rate (G\$)	Amount (G\$)
	<p><b>General Note</b>            All rates must include for transportation, materials, labour, machinery and equipment, overheads and profits.            All timber members stated below is well seasoned and treated, shall be inspected by the Engineer prior to tarring and installation. Emulsion based tar is NOT accepted.</p>				
3.1	Supply, ring, point, pitch and drive 41 No. 350mm butt dia. 18m long G.H. king piles. Three coats of tar to be applied. Allow for supply and installation of 26G aluminim sheet protection to head of pile.	Lin.m	750		
3.2	Supply, ring, point, pitch and drive 21 No. 350mm butt dia. 14m long G.H. anchor piles. Three coats of tar to be applied.	Lin.m	294		
3.3	Supply, tar and fix 100mm x 200mm x 7200mm GH whaler to king piles using 2 No. 20mm dia. x 600mm long HT. bolts as shown in drawings. (include for 1.2m minimum overlap.)	Lin.m	360		
3.4	Supply, tar, point, fabricate and drive 8m long x 50mm x 300mm greenheart (GH) sheet piles, doubly ply, with 1/2 sheet overlap. See drawings for details.	Sq.m	960		
3.5	Place 500G geotextile fabric behind sheet pile wall extending into earth-fill as shown in drawing.	Sq.m	1200		
3.6	Provide and install 37mm diameter x 14.0m long HT steel tie rods wrapped in hessian complete with 150mm x 150mm x 6mm MS steel plate washers and nuts. Allow for all excavation works required to install tie rods .	Nr.	41		
3.7	Supply and install stainless steel turnbuckles (42mm) for joining tie rods.	Nr.	41		
3.8	Supply and backfill behind revetment using reef sand as directed by the Engineer.	Cu.m	2500		
<b>SUB-TOTAL CARRIED TO LOT SUMMARY</b>					