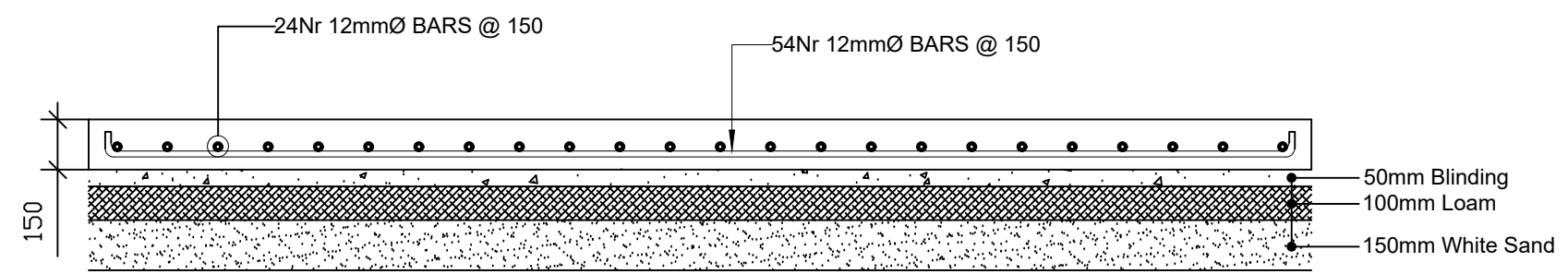
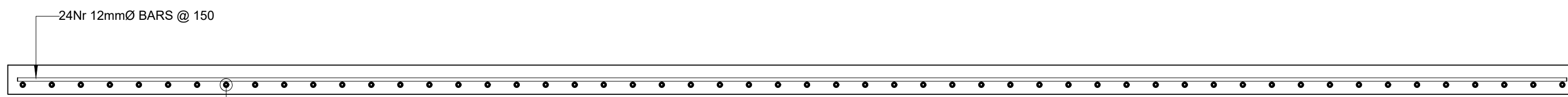


① CONTAINER BASE PLAN  
1:10



② SECTION A-A  
1:5



③ SECTION B-B  
1:5

GUYANA POWER & LIGHT INC. PROJECTS MANAGEMENT DEPT. 257-259 MIDDLE STREET SOUTH CUMMINGSBURG GEORGETOWN.	PROJECT:	GARDEN OF EDEN	DRG. TITLE:	CONTAINER BASE FOUNDATION	DESIGNED BY:	CHECKED BY:	APPROVED BY:
					R.Harris	AS SHOWN	2022-03-11
					DRAWING No. 02	REVISION:	