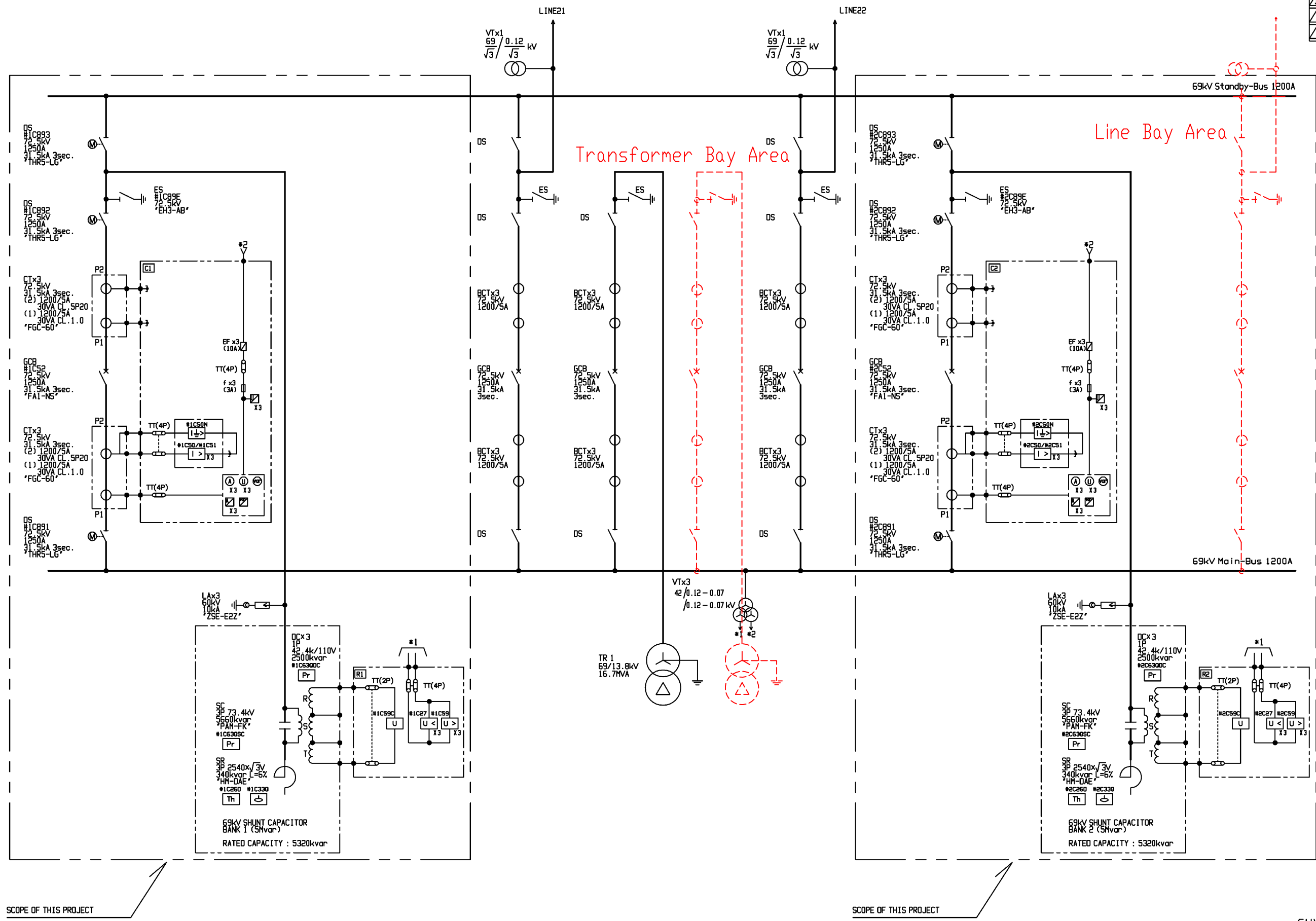


DATE	REVISION	APP'D	DES'D
15.Apr.19	Revised	I.K	H.F
01.Sep.21	Revised	I.K	H.F
15.Sep.21	Revised	I.K	H.F



LEGEND

LEGEND	DESCRIPTION
[Symbol]	DISCONNECTOR
[Symbol]	CIRCUIT BREAKER
[Symbol]	EARTHING SWITCH
[Symbol]	OPERATED BY MOTOR
[Symbol]	LIGHTNING ARRESTOR
[Symbol]	SURGE COUNTER
[Symbol]	CURRENT TRANSFORMER
[Symbol]	OVER CURRENT RELAY
[Symbol]	EARTH FAULT RELAY
[Symbol]	UNDER VOLTAGE RELAY
[Symbol]	OVER VOLTAGE RELAY
[Symbol]	VOLTAGE BALANCE RELAY
[Symbol]	AMMETER
[Symbol]	VOLTMETER
[Symbol]	VARIOMETER
[Symbol]	SIGNAL CONVERTER
[Symbol]	SHUNT CAPACITOR
[Symbol]	SERIES REACTOR
[Symbol]	DISCHARGE COIL
[Symbol]	FUSE
[Symbol]	ENCLOSURE FUSE
[Symbol]	TEST TERMINAL
[Symbol]	THERMOMETER DEVICE
[Symbol]	GAS DETECTING DEVICE
[Symbol]	PRESSURE DEVICE
[Symbol]	TRANSFORMER
[Symbol]	VOLTRAGE TRANSFORMER

NOTE:

NO.	DESCRIPTION
[C1]	69kV CONTROL PANEL (BANK 1)
[R1]	69kV CAPACITOR BANK PROTECTION PANEL (BANK 1)
[C2]	69kV CONTROL PANEL (BANK 2)
[R2]	69kV CAPACITOR BANK PROTECTION PANEL (BANK 2)

SCOPE OF THIS PROJECT

SCOPE OF THIS PROJECT